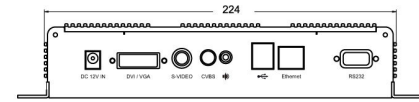


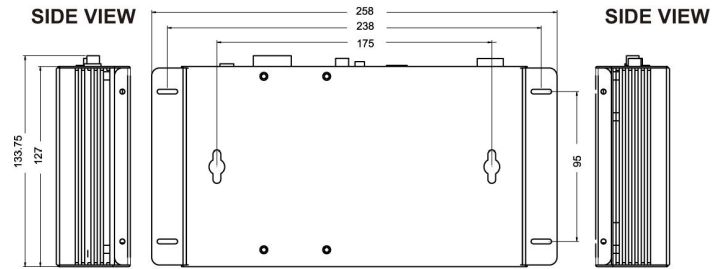
Network PLAYER Series

Model name: DMG300-GPS

Full-SD
480p
576p



TOP VIEW



BACK VIEW



CONNECTOR VIEW

System Specs:

General :

Dimensions	224(W) 127(H) 47(D) mm
Weight	Approx. 1.0kg
Storage Media	1G MB, Optional with bigger capacity up to (40GB) (Need to be Linux ext2 format)
USB Port	USB 2.0 for Flash Storage Drive
Content Update	Ethernet/WLAN/USB flash drive

Content(Media Formats) :

Video Format support	MPEG1, MPEG2, MPEG4
Graphics Format support	JPEG, BMP, PNG
Text Banner	Variable scrolling speed and position

Input/ Output:

Output	
Audio Output	DVI-I / VGA / S-video/Composite
Video Output	Stereo Phone jack
Network Connection	
Ethernet LAN	1 x RJ45-10/100/Mbps

APPROVALS & CERTIFICATES

This product has been tested / approved by the following

societies: **FC** **CE** **RoHS**
COMPLIANT 2002/95/EC

Environment Considerations:

Operating Temperature	0 to 50°C
Humidity	5-85%@50°C

Power Specifications:

Power Adapter	12V DC in
Power Consumption	Approx:5W
Power Source	AC100~240V, Universal, ±10%

Available Options:

miniPCI for 802.11 b/g WLAN
RS232 x 1

Accessories:

AC-DC Power adapter and AC Power cable
Content Management Software MSO Gold
Operation User Manual & CD
DVI-DVI Cable
GPS Receiver
RS232 to GPS Receiver Cable

MSO Plus VS MSO Gold



Event Trigg



Group Management



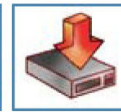
Network Transfer



Content Encryption



Daily Schedul



Auto Update



Lay out Designer

Software Comparison Table		
Feature	MSO Plus	MSO Gold
Group Management	✓	✓
Program / playlist Control	✓	✓
Program Scheduling	✓	✓
Get Client / Group log	✓	✓
Clock Display	✓	✓
Realtime Client Status	✓	✓
Auto Time Sync	✓	✓
Client IP mode (Fixed / DHCP)	✓	✓
Client Configuration via USB / LAN	✓	✓
Realtime RSS Feed	✓	✓
Suggested No. of. players	max. 200	max. 2000
Multiple Zones Display	max. 3 Zones	max. 5 Zones
Background Pictuer Setting	N / A	✓
User-defined Layout	N / A	✓
User-defined Trigger Event	N / A	✓
User-definerd Download Date	N / A	✓
Auto Playing Log Download	N / A	✓

STEP 1.

Create a zone



STEP 2.

Enter coordinates for the zone

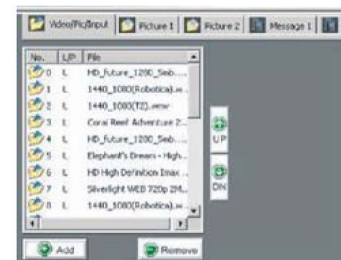
You can use any navigation software to check the coordinates



STEP 3.

Define playlist

Define playlist for the zone



STEP 4.

Transfer

Transfer the setting of coordinates and media files to Network Player

